



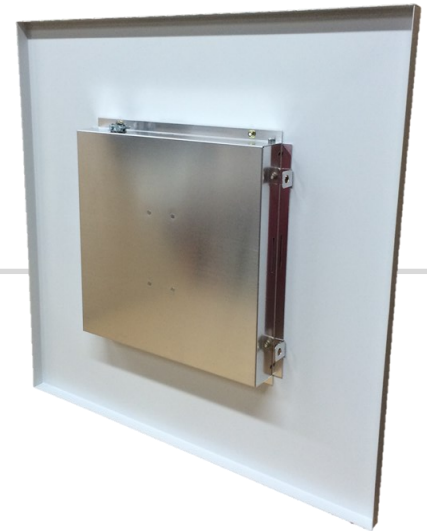
FEATURES

- Universal Design - Just replace the door when migrating to a new AP
- Door is easily removed and can be installed to open in any direction with our innovative spring hinge system
- AP installs onto an integrated mounting plate with no tools
- Key lock for security
- Includes integrated tabs for securing enclosure mount to permanent building structure
- Shallow back box (1.5") allows installation into the tightest ceiling clearances



BENEFITS

- Easy to Install
- No ceiling tile grid modification necessary (if mounting into a 2'x2' grid)
- Service the AP without removing the enclosure mount from ceiling
- Lightweight aluminum design reduces ceiling strain and load
- Simple, one person installation
- Blends seamlessly into ceiling
- No tools required for installation

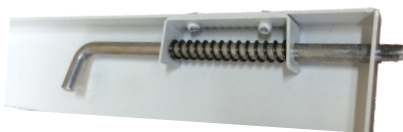


MOUNT SHIPS WITH

- 2x2 Suspended Ceiling Tile Enclosure Mount with installed Cisco2 Door Kit
- Cord Grip
- Key



Integrated mounting tabs on two sides



Spring Hinge



Key Lock



Integrated Mounting Plate, Cord Grip and
Repositionable Door



CISCO AP SUSPENDED CEILING TILE ENCLOSURE MOUNT ATS-CT-CISCO3-2X2



MECHANICAL SPECIFICATIONS

Dimensions: 23.75" x 23.75" x 1.5" (603.25mm x 603.25mm x 38.1mm)
Weight (without AP): 3.8 lb (1.72 kg)
Material: Aluminum
Color: White
Lock: Key Lock
Installation: Suspended Ceiling (includes tabs for securing to building structure)
Equipment Installation: AP Mounting Feet onto Included Mounting Bracket



ENVIRONMENTAL SPECIFICATIONS

Installation Environment: Indoor



STANDARDS, TESTING AND CERTIFICATIONS

Designed to meet NEC300-22 and 300-23 to mount the Cisco APs in plenum/air handling areas



WARRANTY

2 Year Limited Warranty